

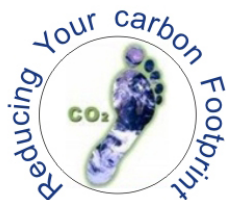
High Production Conveyor Dryers



- The most Efficient and consistent dryers in the world
- Reduce your costs and your carbon footprint by investing in proven drying technology
- Save money and improve your curing ability

Eco-logical

Eco-nomical



EcoTex
ADVANCED CURING SYSTEMS

www.adelco.co.uk

Gas dryer Specifications

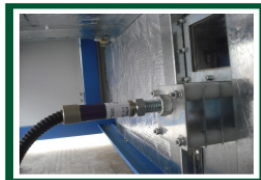
DESCRIPTION	Model(BASED ON EACH BURNER SECTION REQUIRED)				
	ET75G	ET100G	ET120G	ET150G	ET180G
GAS PRESSURE INPUT NATURAL	10"W.G/ 25mbar	10"W.G/ 25mbar	10"W.G/ 25mbar	10"W.G/ 25mbar	10"W.G/ 25mbar
GAS PRESSURE INPUT PROPANE	LINE PRESSURE (REDUCED TO 37MB)	LINE PRESSURE (REDUCED TO 37MB)	LINE PRESSURE (REDUCED TO 37MB)	LINE PRESSURE (REDUCED TO 37MB)	LINE PRESSURE (REDUCED TO 37MB)
GAS CONNECTION NATURAL	3/4"BSP	3/4"BSP	3/4"BSP	3/4"BSP	3/4"BSP
GAS CONNECTION PROPANE	1/4"BSP	1/4"BSP	1/4"BSP	1/4"BSP	1/4"BSP
GAS SUPPLY	125,000BTU(37KW)	150,000BTU(37KW)	175,000BTU(37KW)	200,000BTU(37KW)	225,000BTU(37KW)
TIME FROM AMBIENT TEMP TO 160 °C	APPROXIMATELY 8 MINS	APPROXIMATELY 8 MINS	APPROXIMATELY 10 MINS	APPROXIMATELY 12 MINS	APPROXIMATELY 15 MINS
RECOMMENDED GAS SUPPLY PIPE SIZE	1"BSP STEEL PIPE	1"BSP STEEL PIPE	1"BSP STEEL PIPE	1"BSP STEEL PIPE	1"BSP STEEL PIPE
ELECTRICAL SUPPLY (SINGLE PHASE OPTIONAL)	3 PHASE 220V/ 380V/415V 1kw	3 PHASE 220V/ 380V/415V 1kw	3 PHASE 220V/ 380V/415V 3kw	3 PHASE 220V/ 380V/415V 3kw	3 PHASE 220V/ 380V/415V 3kw
EXHAUST DUCT DIAMETER	4"BSP (100MM)	6"BSP (150MM)	6"BSP (150MM)	6"BSP (150MM)	6"BSP (150MM)

Adelco have over 25 years experience in producing dryers for various solutions including:

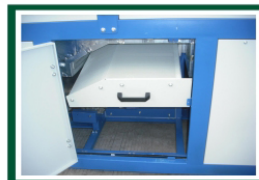
- Textiles - Digital and Screen Print
- Display - Paper, board, transfers
- Glass
- Industrial



Easily adjustable exhaust outlet



New-low maintenance UV flame detection system



Easy Access Lint Filter
No replacements required



Touch Panel Interface

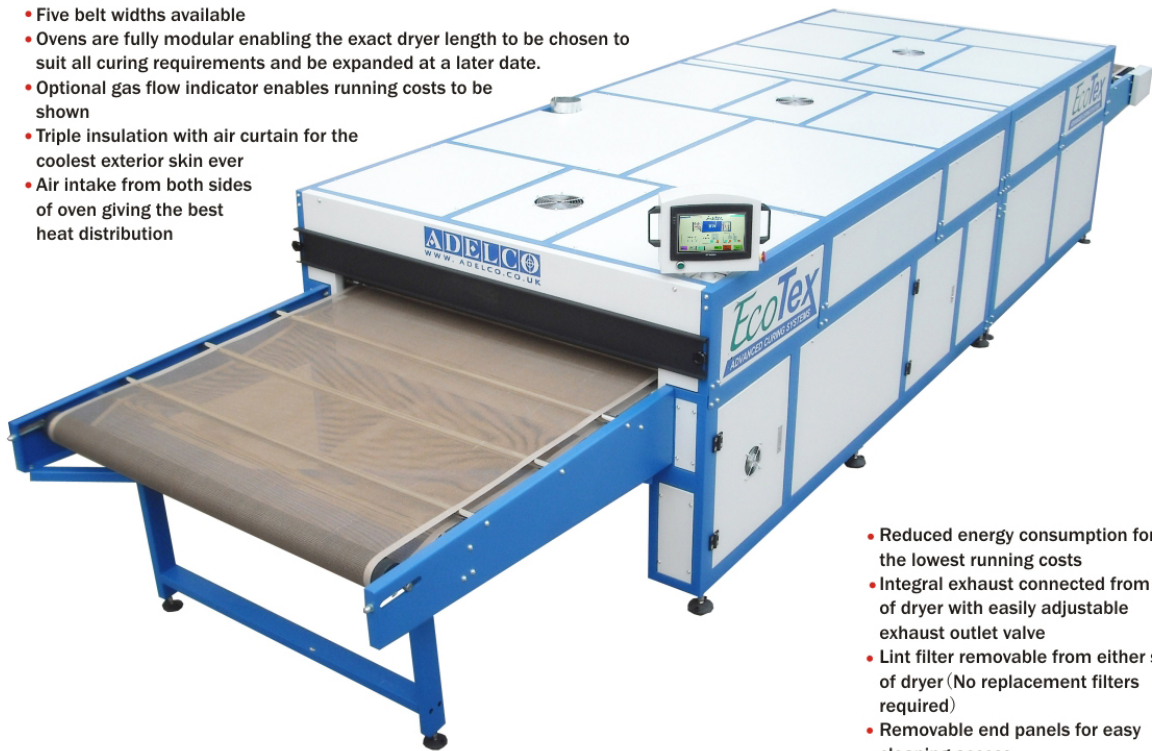
Electric dryer Specifications

DESCRIPTION	Model(BASED ON EACH HEATER SECTION REQUIRED)						
	ET75E-2	ET75E-3	ET100E-2	ET100E-3	ET120E-3	ET150E-3	ET180E-3
TIME FROM AMBIENT TEMP TO 160 °C	APPROXIMATELY 10 MINS	APPROXIMATELY 12 MINS	APPROXIMATELY 12 MINS	APPROXIMATELY 15 MINS	APPROXIMATELY 20 MINS	APPROXIMATELY 22 MINS	APPROXIMATELY 25 MINS
ELECTRICAL SUPPLY	3 PHASE 220V/ 380V/415V	3 PHASE 220V/ 380V/415V	3 PHASE 220V/ 380V/415V	3 PHASE 220V/ 380V/415V	3 PHASE 220V/ 380V/415V	3 PHASE 220V/ 380V/415V	3 PHASE 220V/ 380V/415V
MAXIMUM ELECTRICAL CONSUMPTION	20KW/HOUR	25KW/HOUR	25KW/HOUR	33KW/HOUR	39KW/HOUR	39KW/HOUR	48KW/HOUR
NO. & KW of HEATER	9X2kw(18kw)	12X2kw(24kw)	12X2kw(24kw)	15X2kw(30kw)	12X3kw(36kw)	12X3kw(36kw)	15X3kw(45kw)
AVERAGE ELECTRICAL CONSUMPTION-AT 180 °C	14KW/HOUR	17.5KW/HOUR	17.5KW/HOUR	24KW/HOUR	27KW/HOUR	30KW/HOUR	33KW/HOUR
EXHAUST DUCT DIAMETER	4"(100MM)	6"(150MM)	6"(150MM)	6"(150MM)	6"(150MM)	6"(150MM)	6"(150MM)



Features:

- Five belt widths available
- Ovens are fully modular enabling the exact dryer length to be chosen to suit all curing requirements and be expanded at a later date.
- Optional gas flow indicator enables running costs to be shown
- Triple insulation with air curtain for the coolest exterior skin ever
- Air intake from both sides of oven giving the best heat distribution



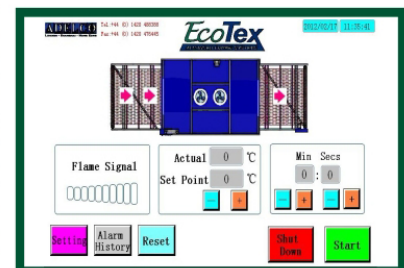
- Reduced energy consumption for the lowest running costs
- Integral exhaust connected from top of dryer with easily adjustable exhaust outlet valve
- Lint filter removable from either side of dryer (No replacement filters required)
- Removable end panels for easy cleaning access

Ecotex gas dryer operating costs chart

BELT WIDTH	OVEN LENGTH	ADELCO AVERAGE GAS CONSUMPTION Kwh	ADELCO AVERAGE ELECTRICAL CONSUMPTION Kwh
75CM	2 METERS	14	1.7
	3 METERS	15	2
100CM	2 METERS	15	1.8
	3 METERS	16.5	2
	4 METERS	18	2.2
	5 METERS	19.5	2.4
120CM	6 METERS	26	3.6
	3 METERS	18	2.1
	4 METERS	19.5	2.3
	5 METERS	21	2.5
150CM	6 METERS	27	3.8
	3 METERS	20	2.3
	4 METERS	21	2.5
	5 METERS	23.5	2.7
180CM	6 METERS	37	4
	3 METERS	23.5	2.4
	4 METERS	26	2.6
	5 METERS	29	2.8
	6 METERS	44	4.2

Adelco figures taken from consumption tests, averaged per hour at 170 degrees, with exhaust closed. Consumption figures can change according to local environment, production throughput, ink and product types. Adelco reserve the right to revise or review these figures as required.

TOUCH SCREEN CONTROL PANEL



Touch Panel control Screen features include:

- Belt speed adjustment. Enter the time required in the oven in mins and secs and watch the belt speed change automatically!
- Digital temperature control
- Alarm history shows any safety or temperature fluctuation alarms with date and time record
- On screen flame signal



Production capacities

MODEL	UNITS/HR PLASTISOL	UNITS/HR WATERBASE/DIS CHARGE	UNITS/HR KORINIT DIGITAL INKS	PRODUCTION INCREASE 1M DRONE	PRODUCTION INCREASE 2M DRONE	PRODUCTION INCREASE 3M OVEN
ET 75	340	150	55	N/A	N/A	+100%
ET 100	480	210	55	+30%	+60%	+100%
ET 120	960	420	110	+30%	+60%	+100%
ET 150	960	420	110	+30%	+60%	+100%
ET 180	1400	630	165	+30%	+60%	+100%

Based on 3 meter oven length and showing production increase for 4, 5 and 6 meter ovens. Calculated assuming a retention time of 50 seconds Plastisol, 120 seconds waterbased/discharge and 6.5 minutes for Kornit inks. Allowing for one product being placed on the belt every 50cm. One line of products on 75cm and 100cm, two lines on 120cm and 150cm and three lines on 180cm belt widths. Production rates will alter according to this product placement and time/temperature settings chosen for individual curing requirements

ADELCO ALSO MANUFACTURE



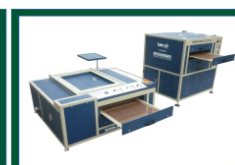
Wide range of flash
cure units



Ellipse oval textile printers



Manual Carousels



Digital drying cabinets

ECOTEX

★ High Performance ★ High Production ★ Low Running Costs ★ Low Emissions

Local distribution:

ADELCO
LONDON · SHANGHAI · HONG KONG

EcoTex
ADVANCED CURING SYSTEMS

ADELCO SCREEN PROCESS LTD.,

HIGHVIEW, HIGH STREET, BORDON, HANTS. GU350AX, ENGLAND.

TEL. +44(0) 1420 488388 FAX. +44(0) 1420 476445 E-mail: sales@adelco.co.uk.

website : www.adelco.co.uk

* All specification correct at time of going to press, Adelco reserve the right to change or amend any detail or specification without notice

Eco-tex